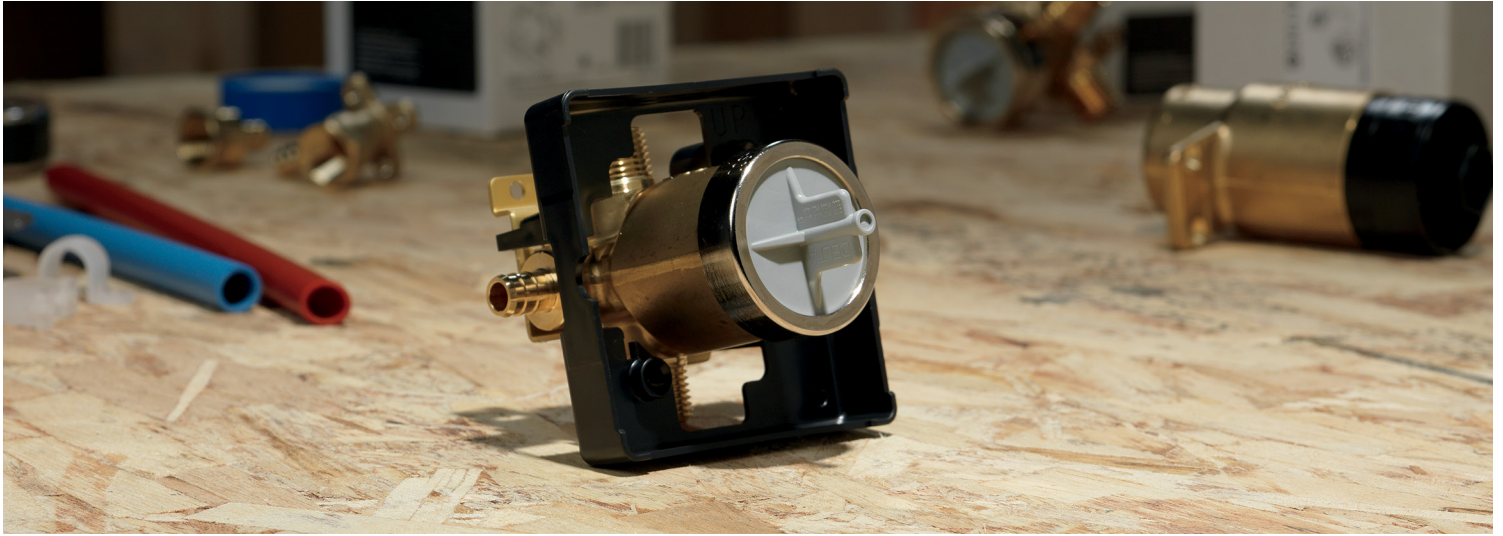


# MULTICHOICE® UNIVERSAL VALVE



## ONE ROUGH. UNLIMITED POSSIBILITIES.

The Delta® MultiChoice® Universal Valve gives you the ability to upgrade shower styles and functionality without altering the plumbing behind the wall, saving you time and money on mid-construction changes and renovations. With MultiChoice Universal Valves, getting what you want has never been so simple.



MONITOR® 13 & 14 SERIES  
TEMPERATURE  
CONTROL



MONITOR 17 SERIES  
TEMPERATURE &  
VOLUME CONTROL



TEMPASSURE® 17T  
SERIES TEMPERATURE  
& VOLUME CONTROL

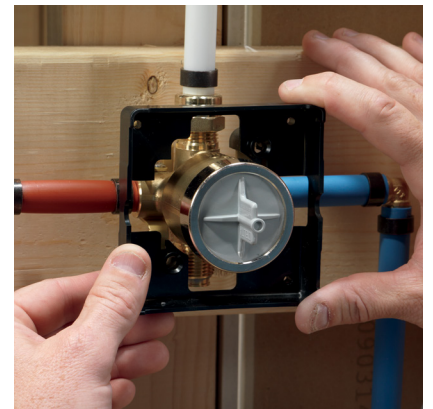
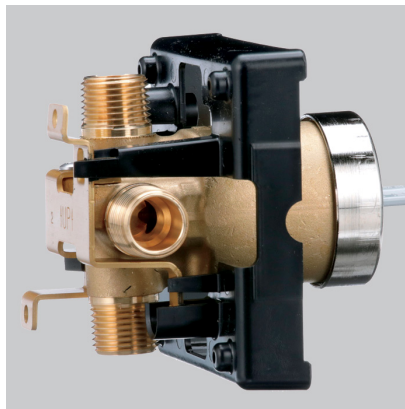


### FEATURES

Three Connection Type Options:  
IPS, PEX and UNIVERSAL

Forged Brass Makes for a Stronger,  
More Durable Product

Square Plasterguard Allows for Simple  
90° Cuts and Snaps into Place



### MULTICHOICE VALVE OPTIONS

- Options available with and without stops; stops are ideal for commercial applications to accommodate service needs
- Pre-fabricated options available with tub drop or shower only; PEX connection already brazed at the plant to speed up installation time
- Integrated diverter options available for custom shower applications eliminating the need to install a separate diverter rough and trim